

SINCE 1964



LEADING MANUFACTURER OF  
**MACHINE TOOL ACCESSORIES**

[www.ambamechanic.in](http://www.ambamechanic.in)



## COMPANY PROFILE

The company Amba Mechanic Works was established in 1964 in Surendranagar, Gujarat. We are leading manufacturer of Machine Tool Accessories. Since inception we had a vision to be a global presence in the field of Machine Tool Accessories. We are working with great determination towards achieving our goals. We aim to remain as “A Trustworthy Quality Manufacturer” by aligning our engineering excellence.

Qualitative Range of products, Ethical business policies, Optimum quality products, Competitive prices, Utmost Client satisfaction. These value-driven factors differentiate us in the market of Machine Tool Accessories.

We have a wide range of products like Revolving center, Pipe center, Dead center, CNC turret sleeve , Adjustable hand reamer, Drill chuck etc. All the products are manufactured in-house. Keeping the convenience of our customers in our mind, we also offer customized manufacturing solutions. Custom centric approach coupled with ethical business policies, has helped us in winning the trust of our valuable customers.

We have developed our infrastructure with sophisticated machinery and latest equipments. We have highly qualified and experienced team of technocrats who excel in providing the best quality products.

Trusted by 50+ dealers, we have established network all over India today. 55 years of persistence and continuous hard work lead us towards zenith of success.

## FOUNDERS

In 1964, Three Like-minded Individuals

Lt. Mr. Nagardas Pithwa  
Lt. Mr. Velsibhai Pithwa  
Lt. Mr. Gopaldas Jadav  
Founded Amba Mechanic.

This Was The Birth Of Today's Leading Brand In Machine Tool Accessories. Right From The Start It Was Characterised By Innovative Strength & Social Commitments.

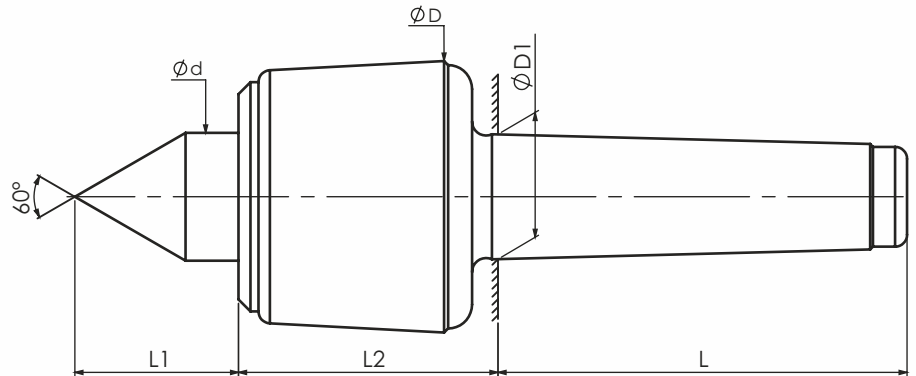
## MISSION STATEMENT. <sup>TM</sup>

“We are glad to represent Amba Mechanic Works,

A company making history in the competitive era of Machine Tool Accessories. This prestigious level of Amba Mechanic Works is merely a result of continuous efforts & dedication of our employees towards the company. We at Amba Mechanic Works believe in making long term & mutually beneficial relationship with our dealers & customers.

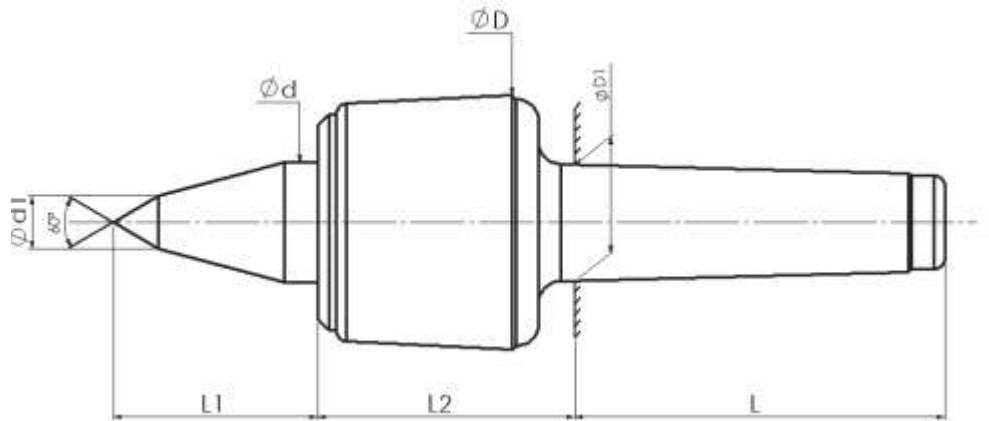
Custom centric approach coupled with ethical business policies has made us prominent in the market. Our reputed dealers & gratified employees are one of the most valuable triumphs. With a vision of creating global presence as a Quality Manufacturer with the same Indian-ness, honesty & dedication Amba Mechanic Works is continuously moving ahead from the roads of growth towards success.”

## HIGH SPEED REVOLVING CENTER CNC HEAVY DUTY (STUB POINT)



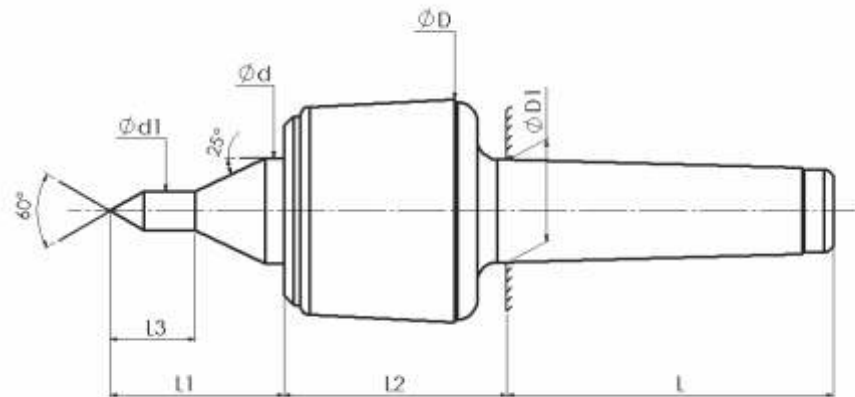
PARTNO.	POINTSTYLE	MT NO.	$\phi d$ MM	$\phi D$ MM	$\phi D1$ MM	L1 MM	L2 MM	L MM	MAX. JOB WT.KG.	CONC. ERROR MM	MAX. RPM
CNCRMT2	STUB POINT	MT-2	20	46	17.780	25.0	48.5	64.0	250	0.005	7000
CNCRMT3	STUB POINT	MT-3	28	62	23.825	34.0	62.5	81.0	550	0.005	5200
CNCRMT4	STUB POINT	MT-4	32	68	31.267	41.0	65.0	102.5	850	0.005	4000
CNCRMT5	STUB POINT	MT-5	38	87	44.399	51.0	80.5	129.5	2100	0.005	3100
CNCRMT6	STUB POINT	MT-6	55	112	63.348	63.0	106.0	182	3600	0.010	2500

# HIGH SPEED REVOLVING CENTER CNC HEAVY DUTY (EXTENDED POINT).



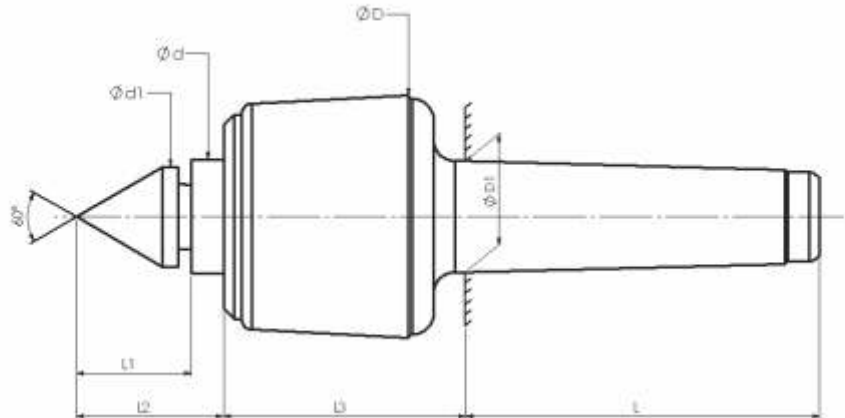
PART NO.	POINT STYLE	MT NO.	$\phi d1$ MM	$\phi d$ MM	$\phi D$ MM	$\phi D1$ MM	L1 MM	L2 MM	L MM	MAX. JOB WT.KG.	CONC. ERROR MM	MAX. RPM
CNC RC MT2	EXTENDED POINT	MT-2	10	20	46	17.780	35.0	48.5	64.0	180	0.005	7000
CNC RC MT3	EXTENDED POINT	MT-3	12	28	62	23.825	51.0	62.5	81.0	450	0.005	5200
CNC RC MT4	EXTENDED POINT	MT-4	14	32	68	31.267	54.5	65.0	102.5	550	0.005	4000
CNC RC MT5	EXTENDED POINT	MT-5	16	38	87	44.399	65.0	80.5	129.5	1250	0.005	3100
CNC RC MT6	EXTENDED POINT	MT-6	18	55	112	63.348	95.0	106.0	182	2400	0.010	2500

## HIGH SPEED REVOLVING CENTER CNC HEAVY DUTY (PROFILED POINT).



PART NO.	POINT STYLE	MT NO.	$\phi d1$ MM	$\phi d$ MM	$\phi D$ MM	$\phi D1$ MM	L1 MM	L2 MM	L3 MM	L MM	MAX. JOB WT.KG.	CONC. ERROR MM	MAX. RPM
CNC RC MT2	PROFILED POINT	MT-2	8	20	46	17.780	35.0	48.5	16	64.0	130	0.005	7000
CNC RC MT3	PROFILED POINT	MT-3	10	28	62	23.825	47.0	62.5	20	81.0	180	0.005	5200
CNC RC MT4	PROFILED POINT	MT-4	12	32	68	31.267	53.0	65.0	26	102.5	200	0.005	4000
CNC RC MT5	PROFILED POINT	MT-5	14	38	87	44.399	65.0	80.5	30	129.5	280	0.005	3100

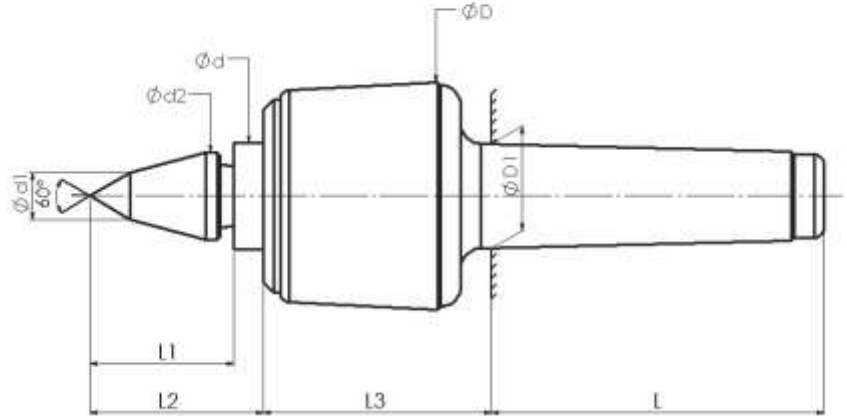
# HIGH SPEED REVOLVING CENTER CNC HEAVY DUTY (INTERCHANGEABLE STUB)



PART NO.	POINT STYLE	INTERNAL FEMALE STYLE	MT NO.	$\phi d1$ MM	$\phi d$ MM	$\phi D$ MM	$\phi D1$ MM	L1 MM	L2 MM	L3 MM	L MM	MAX. JOB WT.KG.	CONC. ERROR MM	MAX. RPM
CNC RC MT3	STUB POINT	1:10	MT-3	24	28	62	23.825	28.0	38.0	62.5	81.0	180	0.005	5200
CNC RC MT4	STUB POINT	1:10	MT-4	28	32	68	31.267	32.5	42.5	65.0	102.5	280	0.005	4000
CNC RC MT5	STUB POINT	1:10	MT-5	34	38	87	44.399	41.0	51.0	80.5	129.5	280	0.005	3100

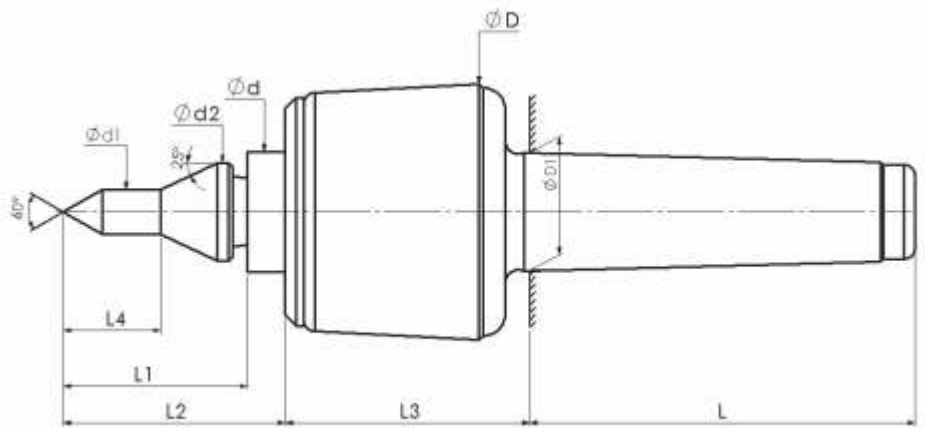


# HIGH SPEED REVOLVING CENTER CNC HEAVY DUTY (INTERCHANGABLE EXTENDED POINT)



PART NO.	POINT STYLE	INTERNAL FEMALE STYLE	MT NO.	$\phi d1$ MM	$\phi d2$ MM	$\phi d$ MM	$\phi D$ MM	$\phi D1$ MM	L1 MM	L2 MM	L3 MM	L MM	MAX. JOB WT.KG.	CONC. ERROR MM	MAX. RPM
CNC RC MT3	EXTENDED POINT	1:10	MT-3	12	22	28	62	23.825	36.5	46.5	62.5	81.0	120	0.010	5200
CNC RC MT4	EXTENDED POINT	1:10	MT-4	14	26	32	68	31.267	42.5	52.5	65.0	102.5	250	0.010	4000
CNC RC MT5	EXTENDED POINT	1:10	MT-5	16	32	38	87	44.399	52.0	62.0	80.5	129.5	450	0.010	3100

# HIGH SPEED REVOLVING CENTER CNC HEAVY DUTY (INTERCHANGABLE PROFILED POINT)



PART NO.	POINT STYLE	INTERNAL FEMALE STYLE	$\phi d1$ MM	$\phi d2$ MM	$\phi d$ MM	$\phi D$ MM	$\phi D1$ MM	L1 MM	L2 MM	L3 MM	L4 MM	L MM	MAX. JOB WT.KG	CONC. ERROR MM	MAX. RPM
CNC RC MT3	PROFILED POINT	1:10	10	22	28	62	23.825	40.0	50.0	62.5	20	81.0	60	0.010	5200
CNC RC MT4	PROFILED POINT	1:10	12	26	32	68	31.267	49.0	59.0	65.0	26	102.5	130	0.010	4000
CNC RC MT5	PROFILED POINT	1:10	14	32	38	87	44.399	57.0	67.0	80.5	30	129.5	200	0.010	3100

ALSO AVAILABLE IN CNC HEAVY DUTY



1. Carbide Tipped  
Stub Point



2. Carbide Tipped  
Extended Point



3. With Draw Off  
Nut Stub Point



4. With Draw Off  
Nut Extended Point

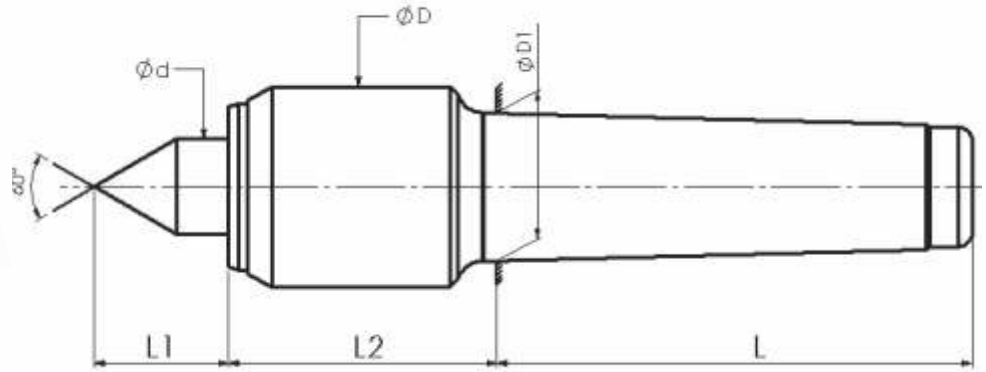


5. With Draw Off Nut  
Carbide Tipped Stub Point



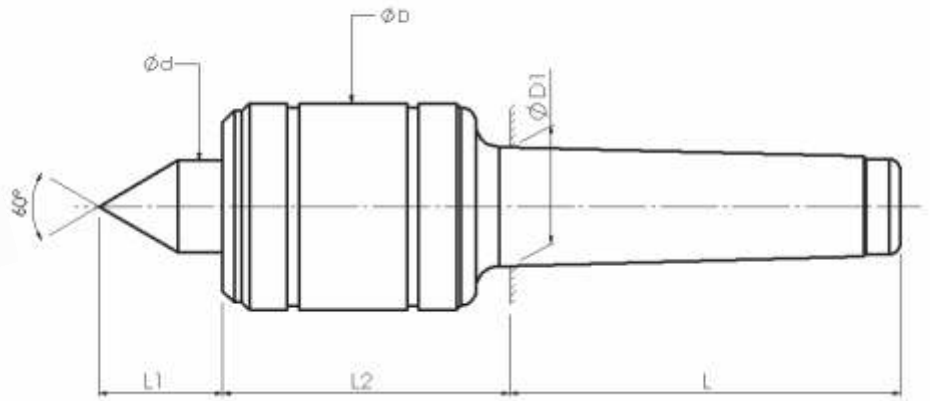
6. With Draw Off Nut  
Carbide Tipped Extended Point

# HIGH SPEED REVOLVING CENTER CNC MD SMALL CASING DIA (STUB)



PART NO.	POINT STYLE	MT NO.	$\phi d$ MM	$\phi D$ MM	$\phi D1$ MM	L1 MM	L2 MM	L MM	MAX. JOB WT.KG.	CONC. ERROR MM	MAX. RPM
CNC SC DIA RC MT2	STUB POINT	MT-2	15	34	17.780	19.0	45.5	64.0	250	0.005	7000
CNC SC DIA RC MT3	STUB POINT	MT-3	15	34	23.825	19.0	45.5	81.0	450	0.005	7000
CNC SC DIA RC MT4	STUB POINT	MT-4	20	42	31.267	25.0	53.5	102.5	850	0.005	6350
CNC SC DIA RC MT5	STUB POINT	MT-5	32	68	44.399	41.0	76.5	129.5	1700	0.010	4350
CNC SC DIA RC MT6	STUB POINT	MT-6	50	102	63.348	58.0	104.0	182	3600	0.015	3000

# HIGH SPEED REVOLVING CENTER CNC MEDIUM DUTY SLIMLINE (STUB)



PART NO.	POINT STYLE	MT NO.	$\phi d$ MM	$\phi D$ MM	$\phi D1$ MM	L1 MM	L2 MM	L MM	MAX. JOB WT.KG.	CONC. ERROR MM	MAX. RPM
CNC MD RC MT3	STUB POINT	MT-3	20.0	42	23.825	26.0	52.0	81.0	550	0.005	6300
CNC MD RC MT4	STUB POINT	MT-4	24.0	54	31.267	32.0	63.0	102.5	850	0.005	4600
CNC MD RC MT5	STUB POINT	MT-5	38.0	87	44.399	51.0	91.5	129.5	2100	0.010	2900
CNC MD RC MT6	STUB POINT	MT-6	59.5	125	63.348	68.0	107.5	182	4000	0.015	2000

**ALSO AVAILABLE IN  
CNC MEDIUM DUTY SLIMLINE**



**1. Extended Point**



**2. Profiled point**

**ALSO AVAILABLE IN  
CNC MD SMALL CASING DIA**

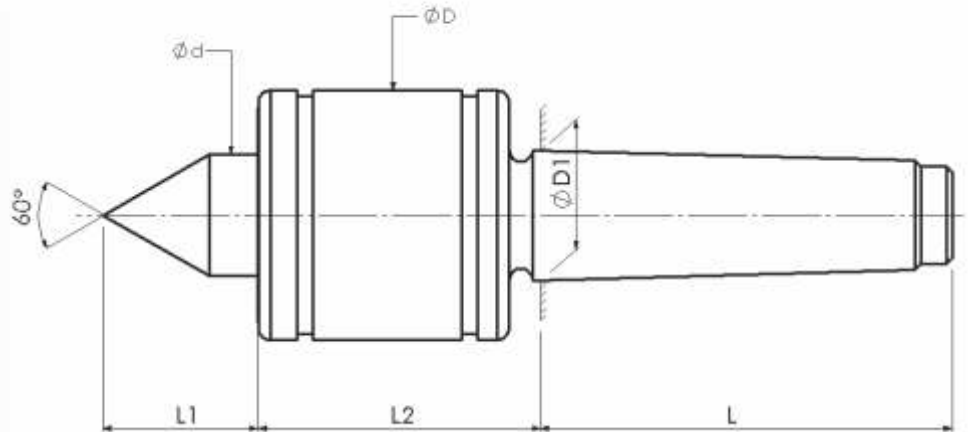


**3. Extended Point**



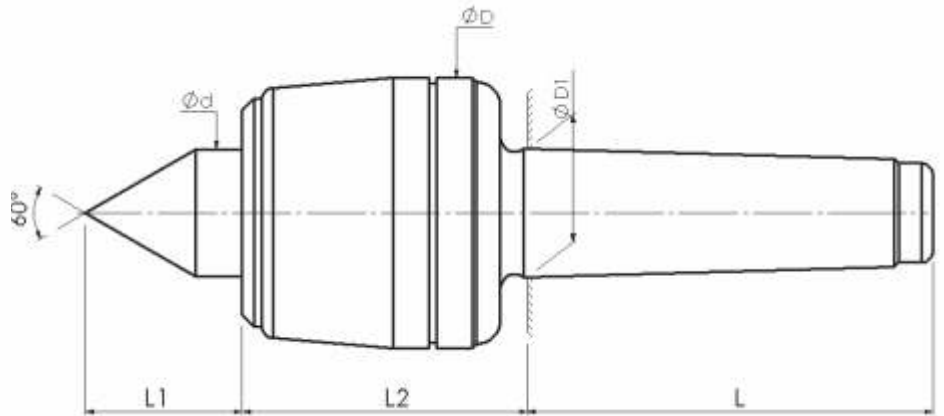
**4. Profiled Point**

SLOW SPEED REVOLVING CENTER  
**SHORT POINT (FOR CONVENTIONAL)**



PART NO.	MODEL	MT NO.	$\phi d$ MM	$\phi D$ MM	$\phi D1$ MM	L1 MM	L2 MM	L MM	MAX. JOB WT.KG.	CONC. ERROR MM
RC MT1	SHORT POINT	MT-1	18.0	46.5	12.065	26.0	51.5	53.5	30	0.010
RC MT2	SHORT POINT	MT-2	23.0	50.0	17.780	31.0	61.0	64.0	55	0.010
RC MT3	SHORT POINT	MT-3	30.0	62.0	23.825	38.0	70.5	81.0	80	0.010
RC MT4	SHORT POINT	MT-4	30.0	62.0	31.267	38.0	73.5	102.5	105	0.010
RC MT5	SHORT POINT	MT-5	34.0	68.0	44.399	42.0	78.0	129.5	155	0.010
RC MT6	SHORT POINT	MT-6	50.0	105.0	63.348	58.0	91.0	182.0	205	0.010

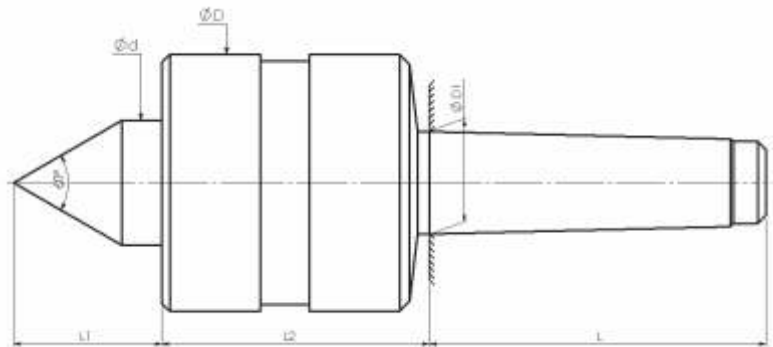
SLOW SPEED REVOLVING CENTER  
**EXTRA HEAVY DUTY (4 BEARING)**



PART NO.	MODEL	MT NO.	$\phi d$ MM	$\phi D$ MM	$\phi D1$ MM	L1 MM	L2 MM	L MM	MAX. JOB WT.KG.	CONC. ERROR MM
RC MT3	EXTRA HEAVY DUTY	MT-3	28.0	63.0	23.825	38.0	66.5	81.0	400	0.010
RC MT4	EXTRA HEAVY DUTY	MT-4	32.0	68.0	31.267	40.0	71.5	102.5	550	0.010
RC MT5	EXTRA HEAVY DUTY	MT-5	38.0	78.0	44.399	45.0	78.0	129.5	1300	0.010
RC MT6	EXTRA HEAVY DUTY	MT-6	55.0	125.0	63.348	63.0	88.0	182.0	2050	0.010

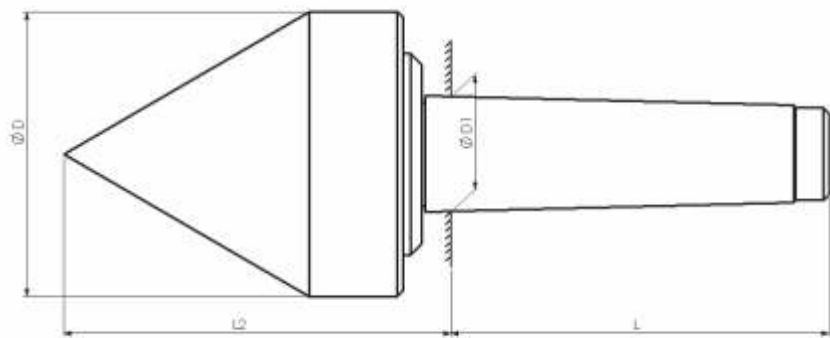
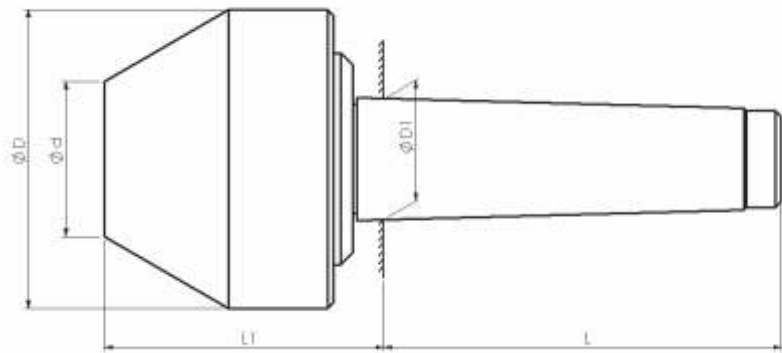


SLOW SPEED REVOLVING CENTER  
**JUMBO EXTRA HEAVY DUTY**



PART NO.	MODEL	MT NO.	Ød MM	ØD MM	ØD1 MM	L1 MM	L2 MM	L MM	MAX. JOB WT.KG.	CONC. ERROR MM
RC JHD MT4	JUMBO HD	MT-4	38.0	78.0	31.267	45.0	81.5	102.5	1000	0.015
RC JHD MT5	JUMBO HD	MT-5	46.0	102.0	44.399	52.0	91.5	129.5	1750	0.015
RC JHD MT6	JUMBO HD	MT-6	65.0	140.0	63.348	71.0	109.0	182.0	4000	0.015

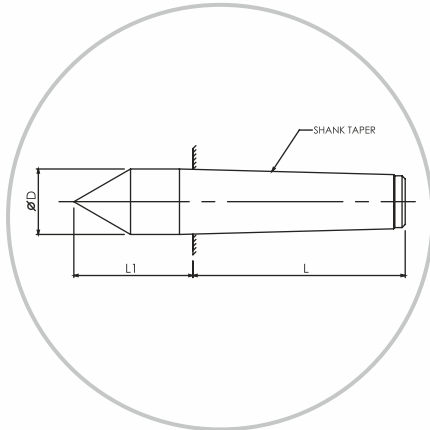
PIPE CENTER



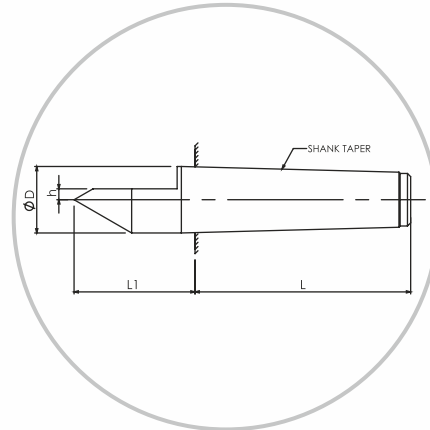
## PIPE CENTER DESCRIPTION TABLE

SHANK TAPER	SIZE		Ød MM	ØD MM	ØD1 MM	L MM	L1 MM	L2 MM
	BLUNT	POINTED						
MT-2	25-50	0 - 2"	25	55	17.780	64	65.5	89
MT-2	30-65	0 - 2 1/2"	30	65	17.780	64	66.5	93
MT-2	40-75	0 - 3"	40	77	17.780	64	70	103
MT-3	25-50	0 - 2"	25	55	23.825	81	65.5	89
MT-3	30-65	0 - 2 1/2"	30	65	23.825	81	66.5	93
MT-3	40-75	0 - 3"	40	77	23.825	81	70	103
MT-3	50-90	0 - 3 1/2"	50	90	23.825	81	68.5	115
MT-3	65-100	0 - 4"	65	102	23.825	81	69	113.5
MT-3	35-125	-	35	127	23.825	81	134.5	-
MT-3	75-125	0 - 5"	75	127	23.825	81	99.5	164
MT-4	25-50	0 - 2"	25	55	31.267	102.5	68	90
MT-4	30-65	0 - 2 1/2"	30	65	31.267	102.5	68	94
MT-4	40-75	0 - 3"	40	77	31.267	102.5	72	105
MT-4	50-90	0 - 3 1/2"	50	90	31.267	102.5	72	115.5
MT-4	65-100	0 - 4"	65	102	31.267	102.5	71.5	117
MT-4	35-125	-	35	127	31.267	102.5	128	-
MT-4	75-125	0 - 5"	75	127	31.267	102.5	93	158
MT-4	75-150	-	75	153	31.267	102.5	98	-
MT-4	100-175	-	100	178	31.267	102.5	128	-
MT-4	100-200	-	100	204	31.267	102.5	128	-
MT-5	25-50	0 - 2"	25	55	44.399	129.5	68	90
MT-5	30-65	0 - 2 1/2"	30	65	44.399	129.5	68	94
MT-5	40-75	0 - 3"	40	77	44.399	129.5	71.5	105
MT-5	50-90	0 - 3 1/2"	50	90	44.399	129.5	72	116.5
MT-5	65-100	0 - 4"	65	102	44.399	129.5	72.5	118
MT-5	35-125	-	35	127	44.399	129.5	129.5	-
MT-5	75-125	0 - 5"	75	127	44.399	129.5	93	159
MT-5	75-150	-	75	153	44.399	129.5	99	-
MT-5	100-175	-	100	178	44.399	129.5	128	-
MT-5	100-200	-	100	204	44.399	129.5	128	-
MT-5	100-230	-	100	231	44.399	129.5	145	-
MT-5	200-275	-	200	275	44.399	129.5	135.5	-
MT-6	65-100	0 - 4"	65	102	63.348	182	85	125
MT-6	35-125	-	35	127	63.348	182	131	-
MT-6	75-125	0 - 5"	75	127	63.348	182	95	168
MT-6	75-150	-	75	153	63.348	182	101	-
MT-6	100-175	-	100	178	63.348	182	123.5	-
MT-6	100-200	-	100	204	63.348	182	123.5	-
MT-6	100-230	-	100	231	63.348	182	140	-

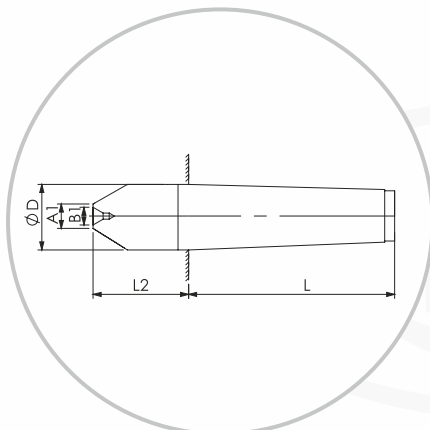
## DEAD CENTER PLAIN



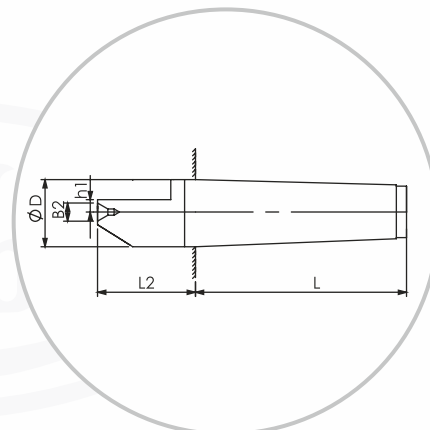
**1.Full (MALE)**



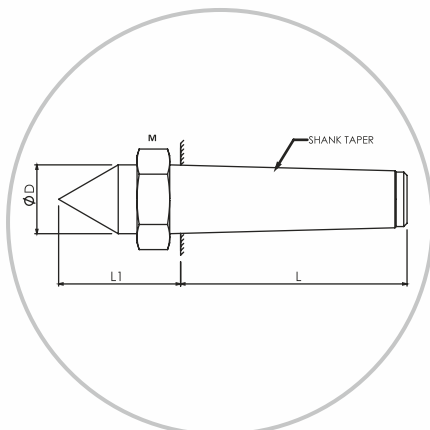
**2.Half (MALE)**



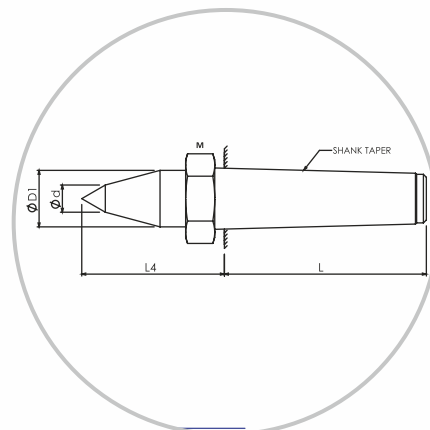
**3.Full (FEMALE)**



**4.Half (FEMALE)**



**5.CNC Dc With Draw  
Off Nut (Stub)**

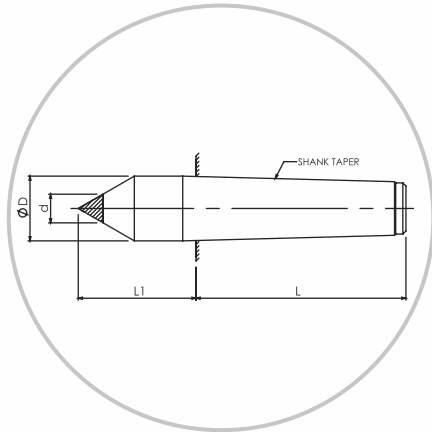


**6.CNC Dc With Draw  
Off Nut (Extended)**

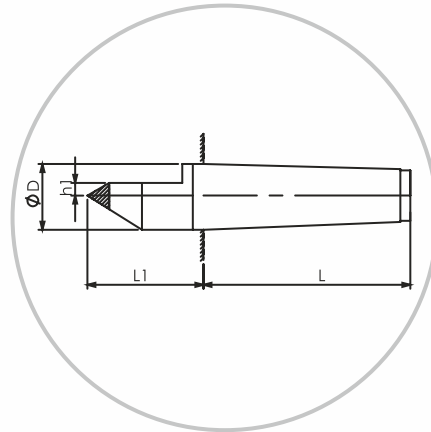
## DEAD CENTER PLAIN

SHANK TAPER	MT-1	MT-2	MT-3	MT-4	MT-5	MT-6
L mm	53.5	64.0	84.0	102.5	129.5	182.0
L1 mm	26.5	36.0	44.0	57.5	70.5	88.0
L2 mm	21.5	29.0	36.0	48.0	58.5	73.0
L3 mm	36.5	48.0	57.0	72.5	87.5	108.0
L4 mm	-	-	70.0	83.5	90.0	-
ØD mm	12.2	18.0	24.1	31.6	44.7	63.8
ØD1 mm	-	-	24.1	31.6	40.0	-
Ød mm	-	-	11.0	14.0	18.0	-
h mm	2.0	2.6	3.450	5.2	11.650	10.1
h1 mm	-	3.0	4.0	5.0	5.5	-
A1 mm	5.5	8.0	9.0	11.0	14.0	17.0
B1 mm	2.5	4.0	5.0	6.0	8.0	11.0
B2 mm	-	2.5	3.0	4.0	5.0	-
M (THREAD)	16 X 1.5	22 X 1.5	27 X 1.5	36 X 1.5	48 X 1.5	68 X 1.5

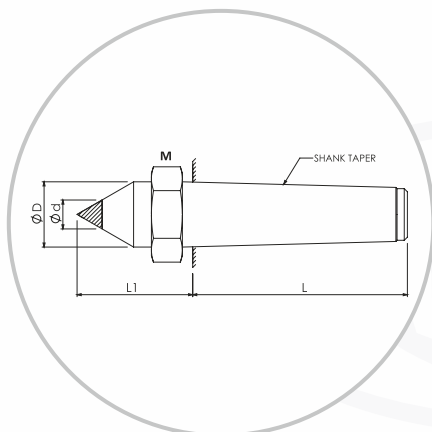
# DEAD CENTER CARBIDE TIPPED



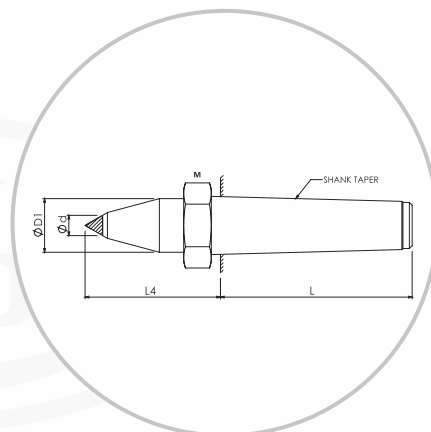
**1. Carbide Full**



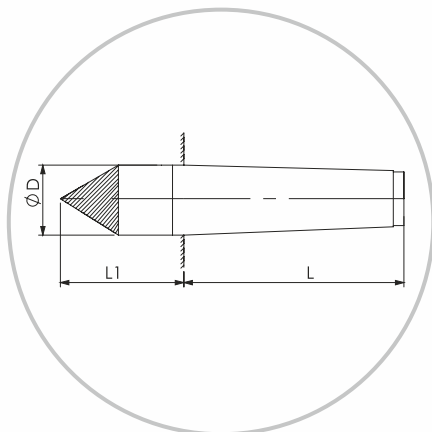
**2. Carbide Half**



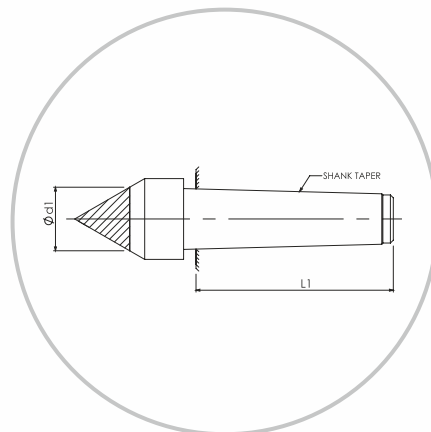
**3. CNC Carbide Full With Draw Off Nut (Stub)**



**4. CNC Carbide Full With Draw Off Nut (Extended)**



**5. Full Carbide 60 Degree**

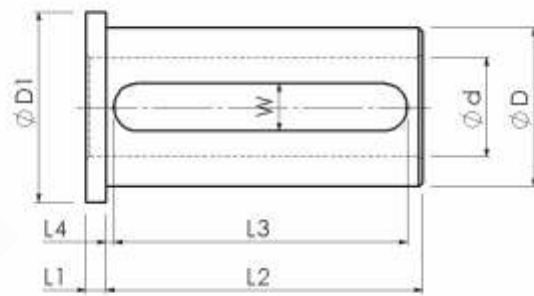


**6. Special Dc With Extra Large tip**

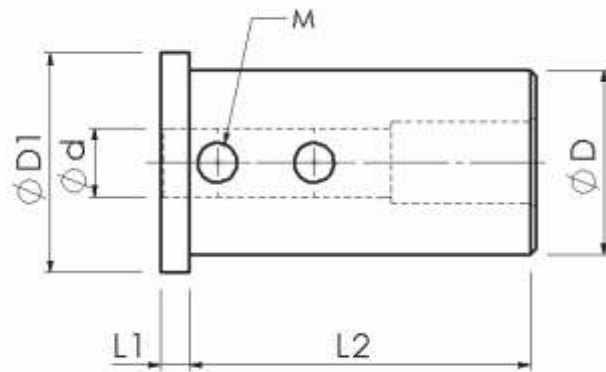
## DEAD CENTER CARBIDE

SHANK TAPER	MT-1	MT-2	MT-3	MT-4	MT-5	MT-6
<b>L mm</b>	53.5	64.0	81.0	102.5	129.5	182.0
<b>L1 mm</b>	26.5	36.0	44.0	57.5	70.5	88.0
<b>L2 mm</b>	36.5	48.0	57.0	72.5	87.5	108.0
<b>L4 mm</b>	-	-	70.0	83.5	90.0	-
<b>ØD mm</b>	12.2	18.0	24.1	31.6	44.7	63.8
<b>ØD1 mm</b>	-	-	24.1	31.6	40.0	-
<b>Ød mm</b>	AD-5	AD-8	AD-11	AD-14	AD-18	AD-18
<b>Ød1 mm</b>	-	AD- 11, 14, 18	AD- 14, 18, 22, 25, 28	AD- 18, 22, 25, 28, 33	AD- 22, 25, 28, 33, 40	-
<b>h1 mm</b>	3.15	5.6	7.0	8.7	10.7	11.1
<b>M (THREAD)</b>	16 X 1.5	22 X 1.5	27 X 1.5	36 X 1.5	48 X 1.5	68 X 1.5

**CNC TURRET SLEEVE UNIVERSAL**



**FIG.1**



**FIG.2**





## CNC TURRET SLEEVE

PART NO.	OD ØD MM	BORE Ød MM	ØD1 MM	W MM	L1 MM	L2 MM	L3 MM	L4 MM	M THREAD	FIG.
TS 16 X 8	16	8	22	-	5	40	-	-	M4	2
TS 16 X 10	16	10	22	7	5	40	32	3	-	1
TS 20 X 8	20	8	26	-	5	50	-	-	M5	2
TS 20 X 10	20	10	26	-	5	50	-	-	M5	2
TS 20 X 12	20	12	26	9	5	50	42	3	-	1
TS 25 X 6	25	6	32	-	5	50	-	-	M5	2
TS 25 X 8	25	8	32	-	5	50	-	-	M6	2
TS 25 X 10	25	10	32	-	5	50	-	-	M6	2
TS 25 X 12	25	12	32	-	5	50	-	-	M6	2
TS 25 X 16	25	16	32	10	5	50	42	3	-	1
TS 32 X 6	32	6	38	-	5	60	-	-	M5	2
TS 32 X 8	32	8	38	-	5	60	-	-	M6	2
TS 32 X 10	32	10	38	-	5	60	-	-	M8	2
TS 32 X 12	32	12	38	-	5	60	-	-	M8	2
TS 32 X 16	32	16	38	10	5	60	52	3	-	1
TS 32 X 20	32	20	38	10	5	60	52	3	-	1
TS 32 X 25	32	25	38	10	5	60	52	3	-	1
TS 40 X 6	40	6	48	-	5	85	-	-	M5	2
TS 40 X 8	40	8	48	-	5	85	-	-	M6	2
TS 40 X 10	40	10	48	-	5	85	-	-	M8	2
TS 40 X 12	40	12	48	-	5	85	-	-	M8	2
TS 40 X 16	40	16	48	12	5	85	77	2	-	1
TS 40 X 20	40	20	48	12	5	85	77	2	-	1
TS 40 X 25	40	25	48	12	5	85	77	2	-	1
TS 40 X 32	40	32	48	12	5	85	77	2	-	1
TS 50 X 10	50	10	60	-	8	92	-	-	M8	2
TS 50 X 12	50	12	60	-	8	92	-	-	M8	2
TS 50 X 16	50	16	60	12	8	92	80	4	-	1
TS 50 X 20	50	20	60	12	8	92	80	4	-	1
TS 50 X 25	50	25	60	12	8	92	80	4	-	1
TS 50 X 32	50	32	60	12	8	92	80	4	-	1
TS 50 X 40	50	40	60	12	8	92	80	4	-	1

## TOOL POST GRINDER



Amba tool Post Grinder Specially Suited For Use On Lathe For Cylindrical Internal And External Grinding. Other Operation Like, Radius Grinding, Face-Grinding And Many More Such Operations Could Be Performed Economically By Developing Proper Set-ups and Mounting On Lathe Shapers And Planer Machines.

The Spindle Is Made Of Alloy Steel, Hardened And Precision Ground. The Spindle Is Supported On Four Precision Angular Contact Bearings To Take Radial And Axial Loads.

Amba Tool Post Grinders Are Delivered Complete With Sturdy Guards, Pulleys, Belts And Grinding Wheel For Ready To Use Assembly.

SINCE 1964

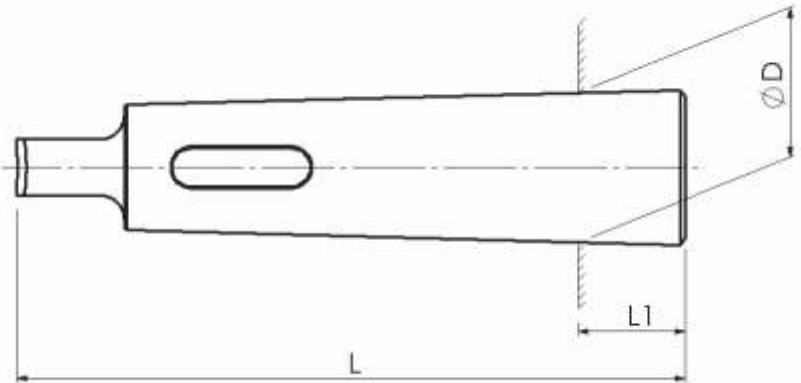
SIZE	GRINDING WHEEL		MOTOR		SPINDLE SPEED RPM		QUILL DIA.	INT. GRINDING DEPTH	SPINDLE PULLEY DIA.		MOTOR PULLEY DIA.	
	EXTERNAL	INTERNAL	HP	RPM	EXT.	INT.			EXT.	INT.	EXT.	INT.
4"	4"X1/2"X1/2"	1"X3/8"X1/4"	1/2	2800	3500	18,000	2"	3 1/2"	2"	1 1/4"	2 1/2"	7"
6"	6"X3/4"X5/8"	1"X3/8"X1/4"	1/2	2800	3500	18,000	2"	3 1/2"	2"	1 1/4"	2 1/2"	7"
8"	8"X3/4"X3/4"	1"X1/2"X1/4"	1	2800	2800	10,000	2 1/2"	4 1/2"	2" 1/2"	17/8"	2 1/2"	6"
10" LIGHT DUTY	10"X1"X1/4"	---	1	2800	2800	---	2 1/2"	4 1/2"	---	---	2 1/2"	---

## ADJUSTABLE HAND REAMER



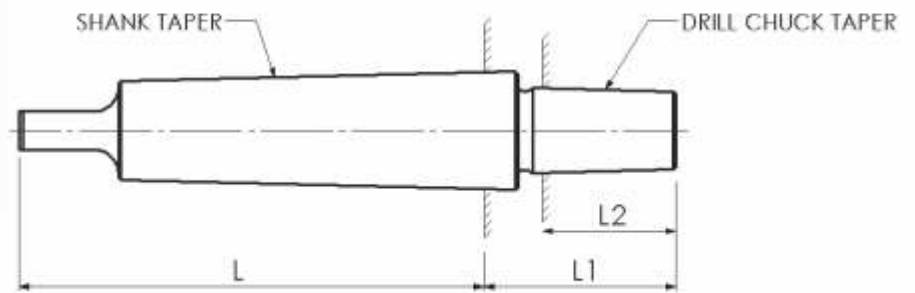
PART NO.	RANGE (INCH)	RANGE (MM)
H - 1	3/8 X 13/32	09.52 X 10.31
H - 2	13/32 X 7/16	10.31 X 11.11
H - 3	7/16 X 15/32	11.11 X 11.90
H - 4	15/32 X 17/32	11.90 X 13.49
H - 5	17/32 X 19/32	13.49 X 15.08
H - 6	19/32 X 21/32	15.08 X 16.66
H - 7	21/32 X 23/32	16.66 X 18.25
H - 8	23/32 X 25/32	18.25 X 19.84
H - 9	25/32 X 27/32	19.84 X 21.43
H - 10	27/32 X 15/16	21.43 X 23.81
H - 11	15/16 X 1.1/16	23.81 X 26.98
H - 12	1.1 X 1.3/16	26.98 X 30.16
H - 13	1.3/16 X 1.11/32	30.16 X 34.13
H - 14	1.11/32 X 1.1/2	34.13 X 38.10
H - 15	1.1/2 X 1.13/16	38.10 X 46.03
H - 16	1.13 X 2.7/32	46.03 X 56.35

## DRILL SLEEVE



PART NO.	INNER M.T	OUTER M.T	L MM	L1 MM	D MM
MT 1-2	1	2	91	17	17.780
MT 1-3	1	3	98	5	23.825
MT 1-4	1	4	123	6.5	31.267
MT 2-3	2	3	111	18	23.825
MT 2-4	2	4	123	6.5	31.267
MT 2-5	2	5	155	6.5	44.399
MT 3-4	3	4	137	22.5	31.267
MT 3-5	3	5	155	6.5	44.399
MT 4-5	4	5	170	21.5	44.399
MT 4-6	4	6	217	8	63.348
MT 5-6	5	6	217	8	63.348

## ARBOURS FOR DRILL CHUCK.



PART NO.	SHANK TAPER	DRILL CHUCK TAPER	L MM	L1 MM	L2 MM
1/4"	MT- 1	JT - 1	62	24	16.67
3/8"	MT- 1	JT - 2	62	33	22.22
1/2"	MT- 1	JT - 6	62	32	24.50
1/4"	MT- 2	JT - 1	75	25	16.67
3/8"	MT- 2	JT - 2	75	34	22.22
1/2"	MT- 2	JT - 6	75	33	24.50
3/4"	MT- 2	JT - 3	75	41	30.96
1/2"	MT- 3	JT - 6	94	33	24.50
3/4"	MT- 3	JT - 3	94	41	30.96
1/2"	MT- 4	JT - 6	117.5	34.5	24.50
3/4"	MT- 4	JT - 3	117.5	42.5	30.96
1/2"	MT- 5	JT - 6	149.5	34.5	24.50
3/4"	MT- 5	JT - 3	149.5	42.5	30.96

## DRILL CHUCK WITH KEY AND KEYLESS DRILL CHUCK



MODEL	SIZE
1-6 mm	JT-1
1-6 mm (24 tpi)	JT-1
1-10 mm	JT-2
1-10 mm(24 tpi)	JT-2
1-13 mm	JT-6
1-10 mm(20 tpi)	JT-6
1-20 mm	JT-3

**PRODUCT RANGE**



The logo for AMBA MECHANIC WORKS is a white rounded rectangle with a blue border, containing a stylized blue 'A' shape. The background of the entire page features a large, abstract graphic of overlapping circles in shades of light blue and grey, with a prominent bright blue circle on the right side.

## **AMBA MECHANIC WORKS**

DUDHREJ ROAD, SURENDRANAGAR. Gujarat- INDIA.

Mob :- +91 99787 00008 , +91 97121 01111

Email :- [ambamechanic@gmail.com](mailto:ambamechanic@gmail.com)

Web :- [www.ambamechanic.in](http://www.ambamechanic.in)